

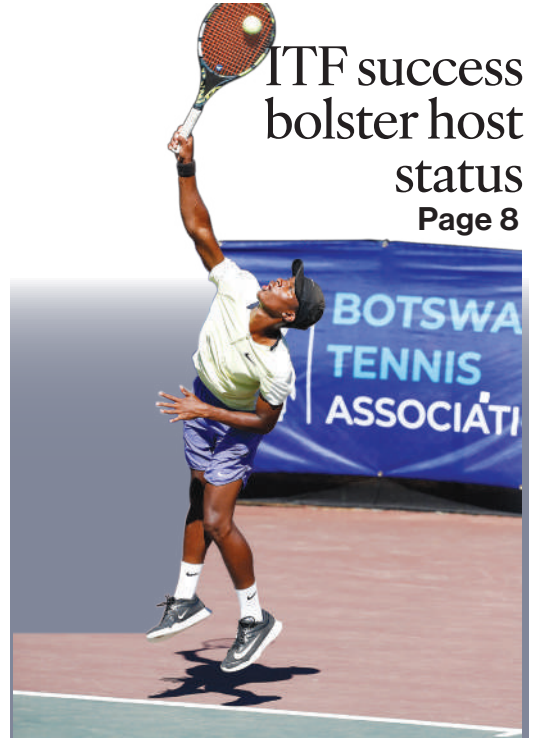
# BOTSWANA Daily News

THE PAPER THAT INFORMS AND EDUCATES



### Selebo earns double nomination at US music awards

Page 7



### ITF success bolster host status

Page 8

#### NEWS

### Govt tightens Ebola surveillance

Page 3

#### BUSINESS

### Botswana and South Africa deepen conservation efforts

Page 4

#### DIKGANG

### Kgosi Bimbo o bolokwa ka Matlhatso

Tsebe 5

# Botswana joins diamond bourses body



Minister of Minerals and Energy, Ms Bogolo Kenewendo (right) and World Federation of Diamond Bourses (WFDB) president, Mr Yoram Dvash at the WFDB Summit in Gaborone on Monday. Minister Kenewendo announced that Botswana had been admitted into the WFDB through the Botswana Mercantile Exchange and the Botswana Diamond Hub. She said the development reaffirmed the country's position as not only a producer, but also a home of natural diamonds. Photo: Washa Bofelwang

STORY PAGE 3

**SHOP**  
Get a sticker for every P100 you spend.

**COLLECT**  
Fill your collector card with 20 stickers.

**SAVE up to 70%**  
on MasterChef pans.

# Reward

yourself with more

MasterChef  
THE TV SERIES

Terms and Conditions apply. Promotion valid from 23 March to 28 June 2026. Completed collector cards can be redeemed until 12 July 2026. Stickers can be collected at any SPAR, SUPERSPAR and TOPS at SPAR stores. Masterchef products may only be redeemed at SPAR and SUPERSPAR stores. Exclusive to SPAR stores in Botswana. WHILE STOCKS LAST. © 2026 Shine TV Limited. MasterChef and the MasterChef logo are registered trademarks of Shine TV Limited and its affiliates. Licensed by Banijay Entertainment. All Rights Reserved.

# Official appeals for support in local health programmes

Omphile Ntakhwana  
SHERWOOD

The business community has been urged to work closely with grassroots health programmes in Botswana to promote health and wellness among citizens and the wider population.

Speaking at the annual Sherwood Health and Wellness Day hosted by the District Multi-Sectoral AIDS Committee (DMSAC), RISE Project/Jhpiego programme and technical manager, Mr Goitseone Pampiri, said the country remained concerned about emerging cases of HIV, gender-based violence, mental health challenges and non-communicable diseases (NCDs).

The annual Sherwood Health and Wellness Day, which includes a football tournament, is aimed at bringing essential services closer to farm workers in the Tuli Block farms. It was organised through the Lerala Village Multi-Sectoral AIDS Committee (VMSAC).

Mr Pampiri said health and

wellness were important aspects of every individual's life, adding that the outreach initiative sought to bridge the gap for people working and living in the Tuli Block farms.

"It is my understanding that this event happens annually and that people living within the Tuli Block farms are disadvantaged by distance in seeking health and wellness services as they have to travel to Lerala," he said.

He said access to quality and affordable healthcare was a right that should be enjoyed by all citizens, adding that the event was helping to address disparities in access to healthcare services.

"A lot still needs to be done because accessing health and wellness services cannot be a once-a-year activity. It has to be accessed regularly for one to live longer and maintain a healthy lifestyle," Mr Pampiri said.

He further said the country was looking forward to the proposed National Health Insurance Bill, which had the potential to revitalise

the health sector and improve access to healthcare services for marginalised communities.

Mr Pampiri added that health and wellness encompassed several dimensions, including spiritual, social, emotional, financial, environmental and intellectual well-being.

"We would like to appeal to the business community at grassroots and district level to come together through corporate social responsibility initiatives and address the unmet health and wellness needs in Palapye District. Those already supporting such initiatives, we applaud you," he said.

For her part, Lerala VMSAC chairperson Ms Grace Molatlhegi

said interest and cooperation from farm owners and employees had grown significantly over the years, creating a valuable platform to improve service delivery and the well-being of farm communities.

"We need to encourage one another to seek early medical intervention and routine screenings and testing for illnesses such as HIV, breast, cervical and prostate cancers," she said.

Ms Molatlhegi said the health and wellness day was preceded by an HIV testing campaign conducted across farms.

"Our concern is that some farms remain inaccessible because gates are locked, preventing us from reaching workers and communities with services," she said. She said

organising the event required significant effort, which was further complicated by limited government funding.

"Moving forward, we need to find quicker ways of bringing essential health and wellness services to farm communities, perhaps every quarter, because annual outreach is no longer practical," she said.

Various health and wellness service providers attended the event, including private sector companies such as Mascom Wireless, Orange Botswana, Access Bank Botswana, Absa Bank Botswana and Stepping Stones International, as well as government departments including the Botswana Police Service and Botswana Unified Revenue Service. **BOPA**

## Learners fainting spell continues

Gaolethoo Kgatitswe  
MAUN

Fainting incidents at Boseja Primary School in Maun are still persisting as seven learners fainted on Monday, following the reopening of the school after a temporary closure.

Last week, Minister of Child Welfare and Basic Education, Ms Nono Kgafela-Mokoka closed the school temporarily following reports that 15 learners had collapsed under unclear circumstances.

Addressing stakeholders, which included parents, teachers, school management, district leadership and representatives from the Ministers Fraternal recently, North West District Commissioner, Mr Thabang Waloka, urged them to approach the matter with caution and unity, noting that the cause of the incidents remained unknown.

"We have to take each and every piece of advice seriously and with equal weight because there is no suggestion that is above another in this situation hence, we should give all ideas an opportunity as we work towards resolving this matter," he said.

As part of the resolutions reached during the meeting, the district commissioner advised that learners who were frequently affected by the fainting episodes be temporarily excused from attending school in order to determine whether the episodes would persist outside the school environment.

The move, he said would help authorities assess whether other learners who had not previously been affected would experience similar incidents in the absence of those who had been affected before.

Stakeholders resolved that the matter would be reassessed next week after monitoring developments during the temporary arrangement.

Mr Waloka further encouraged the Ministers Fraternal to organise inclusive mass prayers involving all church denominations in the district so that the community could

collectively participate in efforts to address the situation.

Boseja Primary School Head, Ms Gagobonwe Tshegofatso, said the incidents initially involved two learners who frequently fainted after visiting the school toilets before the number gradually increased over recent weeks.

She said while some of the learners affected on Monday had previously experienced similar incidents, others reportedly fainted for the first time.

Ms Tshegofatso further revealed that prior to the fainting incidents, some teachers had raised concerns over unusual occurrences at the school, including reports of cat hair found on chairs and human faeces discovered on classroom tables.

She added that some affected learners claimed to have seen a black cat or an unidentified woman dressed in black before collapsing, although the claims remain unverified.

She added that the cause of the incidents had not yet been established.

Meanwhile, a teacher at the school, Mr Left Tumedu, suggested that learners who were repeatedly affected by the incidents be temporarily transferred to other schools to determine whether the situation would persist in a different environment.

"Sometimes when children see others receiving attention through certain situations, they may adapt to that behaviour as a coping or attention-seeking mechanism and that is why this matter needs to be handled carefully and seriously," he said.

Speaking on behalf of the Ministers Fraternal, Evelyn Frank, said churches would continue offering prayers for the school and affected learners.

District authorities have since resolved to continue holding weekly meetings to monitor developments and coordinate interventions until the situation is resolved. **BOPA**



UNICEF Representative to Botswana, Mr Kimanzi Muthungi (left) and Chobe Holdings managing director, Mr Lempheditse Odumetse (right) signing a Memorandum of Understanding during the official opening of the Early Childhood Development training programme in Maun recently. Witnessing the signing are, Minister of Child Welfare and Basic Education, Ms Nono Kgafela-Mokoka (second row centre), HATAB vice chairperson, Mr Tebogo Boalotswe (second row left) and North West District Council chairperson, Mr Itumeleng Kelebetseng. Photo: Gaolethoo Kgatitswe

## Undetected learning disabilities worrying trend

Gaolethoo Kgatitswe  
MAUN

Concerns over the growing number of children with undetected learning disabilities in the North West District dominated discussions at the just ended four-day Early Childhood Development training that took place in Maun.

Educators, government officials and child development specialists called for early intervention and increased parental awareness to prevent vulnerable learners from being left behind.

The training, organised by UNICEF Botswana in partnership with the Ministry of Child Welfare and Basic Education, and the Ministry of Local Government and Traditional Affairs, brought together teachers, centre managers and early childhood practitioners to strengthen quality learning systems for young children.

However, beyond discussions on curriculum development and classroom practices, participants repeatedly highlighted the silent struggles faced by children whose developmental and learning challenges were often ignored, misunderstood or discovered too late.

UNICEF Education Specialist,

Ms Leseka Mokokomani, led discussions around learning disabilities and developmental delays, encouraging educators to pay closer attention to behavioural patterns and academic struggles that may signal underlying challenges.

Social Worker at Tshidilo Stimulation Centre, Ms Tagwa Chanke, shared that many children in the North West District progressed through several school levels without proper assessment or intervention, only for learning difficulties to be identified much later in their academic journey.

She revealed that many parents were in denial when concerns were raised about their children, while others lacked sufficient knowledge to recognise signs of developmental disorders at an early stage.

"Learners are often wrongly labelled as stubborn, lazy or disruptive when in reality they require specialised educational support and this needs to be taken seriously in our schools," she said.

Ms Chanke stressed that early identification and intervention remained critical in improving learning outcomes and emotional wellbeing for children with developmental challenges.

She said delays in recognising

learning disabilities often affected children's confidence, classroom participation and long-term educational performance.

Principal education officer for North West District, Ms Veronica Ridge, said teachers needed practical skills to identify vulnerable learners early and create supportive classroom environments that accommodate children with different learning needs.

She highlighted that the training would enhance and equip early childhood teachers with the skills to be able to better handle children with learning disabilities and enable them to identify such learners early for early interventions.

For her part, representative from the Ministry of Child Welfare and Basic Education, Ms Maureen Selwe, emphasised the importance of immediate intervention in cases involving child abuse or neglect, noting that trauma can also affect a child's cognitive and emotional development.

She said greater collaboration between teachers, parents, health professionals and communities was necessary to ensure children with learning disabilities were identified early and given the support they needed before falling permanently behind in school. **BOPA**

# Botswana joins diamond bourses body

Ketshepile More  
GABORONE

Botswana's admission into the World Federation of Diamond Bourses (WFDB) signals the country's intention to strengthen its role in diamond trade facilitation, market connectivity and trusted trading ecosystems.

This was said by Minister of Minerals and Energy, Ms Bogolo Kenewendo during the WFDB Summit in Gaborone on Monday, where she announced Botswana's admission into WFDB.

She said Botswana was admitted through the Botswana Mercantile Exchange and the Botswana Diamond hub.

She said the membership would enable Botswana work closely with global industry partners in reigniting the diamond sector while positioning the country as a leading international diamond trading hub.

Also, Ms Kenewendo said the

development reflected Botswana's growing ambition, not only to mine diamonds, but also to contribute meaningfully to the institutions and systems shaping the future of the industry.

"In an evolving global market, the future competitiveness of natural diamonds will increasingly depend not only on production but also on trust, traceability, governance, efficient market systems and credible trading frameworks," she said.

She further called for stronger cooperation within the diamond sector, saying restoring trust and confidence in the industry required

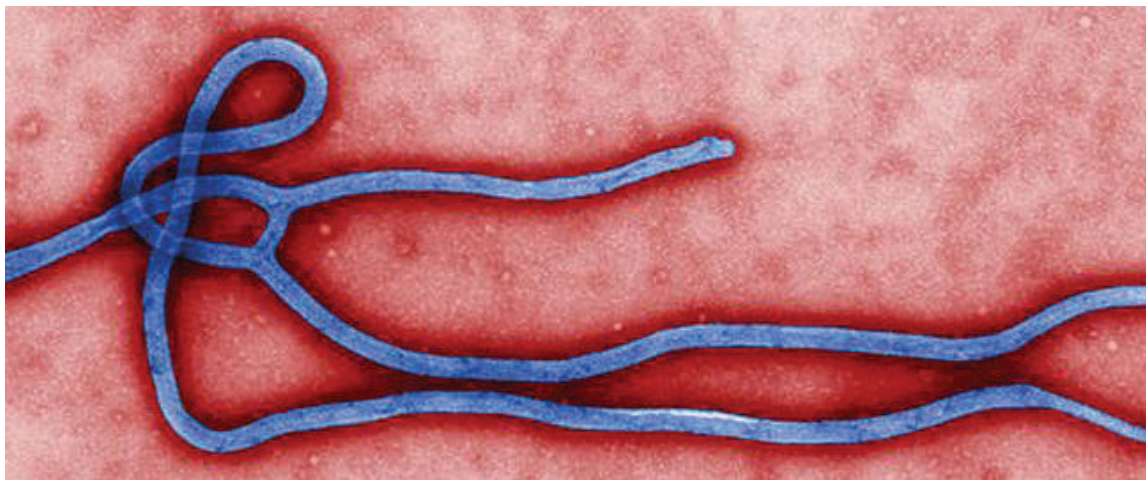
an end to siloed approaches and greater intentional collaboration.

"There is need for concerted, intentional industry collaboration," she said.

WFDB president, Mr Dvash described Botswana's admission as a necessary partnership that would help connect diamond producers with international trading circuits.

He revealed that discussions on Botswana becoming a nation-affiliated WFDB member began six months ago in New York City.

Established in 1947, the WFDB represents the world's major diamond bourses and promotes the interests of its members, comprising more than 28 780 bourse members across 27 bourses worldwide. **BOPA**



Ebola is a serious and deadly virus transmitted by animals and humans. It was initially detected in 1976 in Sudan and the Democratic Republic of Congo. Researchers named the disease after the Ebola River. Until recently, Ebola appeared in Africa only. Although the Ebola virus has been present for more than 35 years, the largest outbreak began in West Africa in March 2014. This outbreak has proven more deadly, severe, and widespread than previous outbreaks. While cases have significantly declined since the peak of the outbreak, there is still a chance of further outbreaks. Photo: Courtesy of Healthline

## Diamonds central to long-term national prosperity

Ketshepile More  
GABORONE

Botswana aims to close the gap between being a diamond-producing nation and a global trading centre by building stronger trading ecosystems and value chains that deepen economic participation and contribute to global GDP growth.

Addressing the World Federation of Diamond Bourses Summit in Gaborone on Monday, Minister of Minerals and Energy, Ms Bogolo Kenewendo said Botswana's natural diamonds remained central to ambitions of growing trade, tourism, technology, entrepreneurship, beneficiation and long-term national prosperity.

In addition, she said Botswana was determined to localise more of the diamond value chain, arguing that diamonds should leave the country not only as rough stones but also as brands, craftsmanship, technology, investment opportunities and jobs created domestically.

"Diamonds cannot simply leave Botswana in their roughest form. They must leave Botswana as stories, as brands, as craftsmanship, as technology, as an investment, as luxury and as jobs that have been created here at home," she said.

Ms Kenewendo further said Botswana's diamonds represented not only geological history but also a development story in which natural resources had been responsibly used to uplift citizens.

She described Botswana diamonds as responsibly sourced, ethically mined and conflict-free, qualities

increasingly demanded by global consumers.

Thus, she emphasised the need to protect the integrity and market position of natural diamonds against competition from lab-grown alternatives.

"We must continue defending the integrity of our natural diamonds, strengthening category marketing, and educating consumers of the unique value of a product formed naturally over years and not in a lab. A product whose rarity, authenticity, and emotional significance cannot simply be replicated," she said.

Meanwhile, Executive Chairperson and CEO of Dubai Multi Commodities Centre, Mr Ahmed Bin Sulayem said Botswana had become a global model for responsible diamond development and demonstrated how natural diamonds could drive sustainable national transformation.

"Natural diamonds are economic assets that support livelihoods, infrastructure and long-term national transformation not just luxury," said Mr Sulayem.

He noted that the diamond industry faced short-term challenges including tighter financing conditions, but said long-term prospects remained strong because mines retained strategic reserves and profitability.

Mr Sulayem said the future of the industry depended on regulated and transparent ecosystems built around traceability, tokenisation, skills development and institutional alignment among producers, trading hubs and polishers. **BOPA**

## Govt tightens Ebola surveillance

GABORONE

All Botswana points of entry will now conduct fever screening and require health declaration forms for travellers arriving from or transiting

through the Democratic Republic of Congo (DRC) and Uganda within the previous 21 days.

This follows a World Health Organisation declaration of a Public Health Emergency of International Concern over an outbreak of Ebola disease caused by the Bundibugyo virus in the DRC and Uganda.

According to a press release from the Ministry of Health, Botswana has no suspected or confirmed cases of Bundibugyo Virus Disease (BVD), but remains at risk because of its position as a regional truck transit corridor linking the DRC and South Africa, as well as international air travel connections through regional hubs linked to Kampala and Kinshasa.

Ebola disease causes severe haemorrhagic fever and spreads through direct contact with blood or bodily fluids of an infected person or a deceased patient.

Symptoms may appear between

two and 21 days after exposure. Previous outbreaks have recorded fatality rates of between 30 and 50 per cent.

As such, the release advises the public to avoid contact with blood or other bodily fluids, refrain from handling bodies of people who died from unexplained febrile illnesses, avoid unverified traditional remedies, and not consume bush meat imported from affected regions.

The release also states that there is currently no licensed vaccine or specific antiviral treatment for BVD, although early supportive care improves survival rates.

Therefore, the ministry urges the public to remain calm but vigilant, avoid non-essential travel to affected areas, and monitor themselves for symptoms such as fever, fatigue, muscle pain, vomiting or bleeding for 21 days after returning from Uganda or the DRC. **BOPA**

**DailyNews**

Published by: Department of Information Services  
37795 Wellie Seboni Drive  
Private Bag BR 139 Gaborone

Printed by: Government Printing and Publishing Services

Online Edition: <https://dailynews.gov.bw>  
email: [bopa@gov.bw](mailto:bopa@gov.bw) email: [dailynews@gov.bw](mailto:dailynews@gov.bw)

Circulation 20 000 per day except Saturdays, Sundays and Public Holidays.

**Editors**

Ms Lorato Okaile  
Tel: 365 3640  
Email: [lgaleage@gov.bw](mailto:lgaleage@gov.bw)

Ms Masego Pilane  
Tel: 365 3569  
Email: [mkipilane@gov.bw](mailto:mkipilane@gov.bw)

Mr Sefhako Sefhako  
Tel: 365 3589  
Email: [sesefhako@gov.bw](mailto:sesefhako@gov.bw)

Ms Sereki Mpitse  
Tel: 365 3595  
Email: [smpitse@gov.bw](mailto:smpitse@gov.bw)

**Head of Photography** Mr Yobe Shonga  
Tel: 365 3604  
Email: [yshonga@gov.bw](mailto:yshonga@gov.bw)

**Head of Marketing** Ms Lucretia Chima  
Tel: 365 3574  
Email: [lchima@gov.bw](mailto:lchima@gov.bw)

**Head of Graphics** Mr Edward Matlala  
Tel: 365 3557  
Email: [ematlala@gov.bw](mailto:ematlala@gov.bw)

Call: 365 3591 / 3592 / 3593 / 3599 To Advertise



HIS EXCELLENCY MR. MATAMELA C. RAMAPHOSA  
PRESIDENT OF THE REPUBLIC OF SOUTH AFRICA



DUMELA  
WELCOME TO BOTSWANA

20 - 21 MAY 2026





# Daily Business



Minister of Environment and Tourism, Mr Winter Mmolotsi (centre), South Africa deputy minister of Forestry, Fisheries and Environment, Mr Narend Singh (left) and European Union Ambassador to Botswana and SADC, Ms Petra Pereyra during the launch of Botswana-South Africa cross-border conservation initiative in Gaborone recently. The initiative is aimed at strengthening the management of Kgalagadi Transfrontier Park, while unlocking tourism-led economic growth and community development. Photo: Pheny Ramatu

## BUSINESS BRIEFS

### AfDB grants Zimbabwe US\$4m for debt clearance

**HARARE** - The African Development Bank (AfDB) Group has approved a US\$4 million grant to support Zimbabwe's debt clearance efforts and re-engagement with the international financial community. In a statement on Monday, the AfDB said the approval marks a critical step in Zimbabwe's re-engagement. The funding will finance Zimbabwe's Arrears Clearance Dialogue Enhancement Project (ZACDEP), which is aimed at strengthening dialogue and reforms needed to advance the country's arrears clearance process.

According to the AfDB, as of the end of 2025, Zimbabwe's public debt stood at approximately US\$21.5 billion, including US\$11.7 billion in external debt, about US\$7.7 billion of which is owed to multilateral and bilateral creditors. The new financing facility focuses on enhancing debt dialogue and management systems, while incorporating a gender-responsive approach to support women and youth disproportionately affected by debt distress. **Xinhua**

### Cooperation supports farmer training

**WINDHOEK** - Namibia's agricultural cooperation with China and the Food and Agriculture Organisation of the United Nations (FAO) is contributing to farmer training, poultry production and agricultural skills development through technical support and knowledge-sharing programmes, officials have said. Agriculture remains a priority sector under President Netumbo Nandi-Ndaitwah's administration. Namibia's Sixth National Development Plan, Alfred Sikopo, acting executive director at Namibia's Ministry of Agriculture, Fisheries, Water and Land Reform, said in a statement. Sikopo said that agricultural centres such as TAZAC were expected to help improve farmer productivity through training and technical support aimed at strengthening food and nutrition security. Namibia plans to transform agricultural centres into training institutions by 2027, which could create additional opportunities for cooperation with China in the agricultural sector, he added. **Xinhua**

### AfCFTA business forum opens in Togo

**LOME** - The third edition of Biashara Afrika opened on Monday in Lome, the Togolese capital, with a focus on promoting intra-African trade and strengthening the continent's economic integration. Held under the theme 'Powering Africa's Economic Transformation through the AfCFTA', the three-day event has brought together African ministers, business leaders, financial institutions, investors and development partners. Speaking at the opening ceremony, Togolese President of the Council of Ministers Faure Gnassingbe said that Biashara, which means trade in Swahili, is not intended to be just another discussion forum, but rather a platform for solutions, partnerships and the practical implementation of African integration. **Xinhua**

## Botswana and South Africa deepen conservation efforts

**Ndingililo Gaoswediwe**  
**GABORONE**

Botswana and South Africa have launched a cross-border conservation initiative aimed at strengthening the management of the Kgalagadi Transfrontier Park while unlocking tourism-led economic growth and community development opportunities.

Officiating at the project launch in Gaborone on Tuesday, Minister of Environment and Tourism Mr Wynter Mmolotsi said the initiative signalled a renewed commitment by the two countries to biodiversity conservation, regional cooperation and innovative financing mechanisms for protected areas.

The project is supported by the European Union through the SADC Transfrontier Conservation Area Financing Facility, executed by the International Union for Conservation of Nature and implemented in partnership with African Parks under a public-private partnership model.

Mr Mmolotsi said the Kgalagadi Transfrontier Park occupied a historic position within Southern Africa's conservation landscape as the first Transfrontier Conservation Area established in 2000 following a bilateral agreement signed by former Botswana president Dr Festus Mogae and former South African president Mr Thabo Mbeki in 1999.

According to Mr Mmolotsi, the establishment of the park demonstrated the commitment of both countries to jointly protecting a shared ecosystem while advancing regional integration and cooperation.

He said that protected areas across the world continued to face growing financial pressures

caused by climate change, habitat degradation, illegal wildlife activities and rising operational costs.

In this regard, he said the new initiative came at a critical time when the region was grappling with economic challenges that required stronger partnerships to sustain conservation efforts.

Furthermore, Mr Mmolotsi said Botswana had adopted deliberate measures to promote partnerships capable of balancing conservation objectives with economic transformation and community development.

He added that the initiative would help unlock the economic potential of the Kalahari landscape through sustainable tourism development, infrastructure upgrades, enterprise creation, local employment opportunities and increased citizen participation in tourism and conservation value chains.

The minister also explained that the project aligned with the Botswana Economic Transformation Plan, which seeks to diversify the economy away from dependence on minerals and position tourism as one of the leading contributors to the country's gross domestic product by 2030.

In line with that vision, Mr Mmolotsi said Botswana was

The two countries launched a cross-border conservation initiative aimed at strengthening the management of the Kgalagadi Transfrontier Park

targeting 2.7 million tourist arrivals by 2033, with community-based tourism enterprises expected to play a key role in achieving that target.

He highlighted planned campsite developments for communities in Bokspits, Rappelspan, Vaalhoek and Struizendam in the BORAVAST initiative.

He stressed that conservation could only succeed if communities living near protected areas became direct beneficiaries of such projects, particularly because they often bore the burden of human-wildlife conflict and restricted land-use opportunities.

He further said that the project would strengthen biodiversity monitoring, ecosystem management and institutional capacity to ensure the long-term protection of the Kalahari ecosystem.

Meanwhile, South Africa's Deputy Minister of Forestry, Fisheries and the Environment, Mr Narend Singh, described the launch of the project as a major step towards strengthening conservation, community development and regional cooperation between Botswana and South Africa.

Mr Singh said the initiative reaffirmed the commitment of the two neighbouring countries

to the 1999 bilateral agreement that established the Kgalagadi Transfrontier Park as a symbol of peace, cooperation and shared environmental stewardship.

He said the project reflected a shared vision of balancing biodiversity conservation with socio-economic development while ensuring that communities living alongside protected areas directly benefited from conservation initiatives.

He further said the P44.9 million investment represented more than financial assistance, describing it as a demonstration of solidarity, partnership and collective responsibility among governments, communities and development partners.

A key component of the project will be the construction of a 35-kilometre game fence at the Miershoop Pan-Khomani San community-owned game farm.

Mr Singh said the project had already received positive support from the local community and would contribute towards strengthening the community wildlife economy while promoting inclusive conservation.

Moreover, he said that the project would create temporary jobs, provide household income support and equip community members with valuable work experience. Beyond that, the fence would help reduce human-wildlife conflict while improving wildlife management, biodiversity conservation and eco-tourism opportunities.

Mr Singh further observed that the initiative was being launched at a time when the Kgalagadi Transfrontier Park continued to face challenges such as inadequate funding, ageing fence infrastructure and increasing wildfire threats. **BOPA**

# Dikgang

PAMPIRI YA THUTO LE DIKITSISO

## IPAPATSE FA

LELE TSA

659 6315 | 625 0353 | 533 0379 | 297 8237  
261 0480 | 241 3402 | 365 3500



# Ba Dikwididi ga ba itumelele seemo sa tsela

Mmoniemang Motsamai

## DIKWIDIDI

Banni ba motse wa Dikwididi ga ba itumedisiwe ke seemo sa tsela e e gokaganyang Modipane le Mabalane, e ralala motse wa bone, e e phuagantsweng ke rakonteraka.

Tsela e ya sekgala sa dikhilomithara tse 25, ke nngwe ya ditsela tse di dirwang ka lenaneo la Development Manager

Model. Mo phuthengong ya kgotla e e neng e buisiwa ke mothusa-tona wa Lephata la dipagamo le dikago, Rre Keoagile Atamelang ka Mosupologo, banni ba boletse fa ba sa itumelele ka fa tiro e ya tsela e tseletseng ka teng.

Tsela eo ya Modipane-Mabalane ya sekgala sa 25km e ne e dirwa ke konteraka ya Pro-Serve e tshwaraganetse tiro le ya Tau Grading, mme ka ntlha ya go nna le tlhoka-kutlwisano,

dikonteraka tseo di ne tsa felela di ya fa pele ga kgotla ya ditsheko.

Banni ba re ba ne ba kgona go dirisa tsela eo e le mo seemong sa yone sa lekgarapana, mme fa e sale e dirwa, ga ba kgone go e dirisa.

Ba boletse fa go phuagangwa ga yone go ba baketse mathata ka jaana e sa tlhole e tsamaega.

Banni ba boletse fa tiro e e setseng e dirilwe ke rakonteraka e bakile gore metsi a eme mo tseleng, mme se se ba baketse

mathata a mantshi a tshwana le koketsego ya monang, le gore maiteko a go bulela metsi ao, a bakile gore metsi a tsewe mo taolong mme a ame dijarata tse di mabapi le tsela.

Mongwe wa banni, Mme Matshadi Tsae a re morago ga gore metsi a emeng mo tseleng a bulelwe, matlo a bone a kolobile, bana ga ba tsamae ka kgololesego go ya sekoleng le gore ba tlhorontshiwa ke monang.

Rre Mosinki Gare ene o boditse gore puso e ikaelela go dira eng ka mathata a a dirilweng ka bomo, le gore a ga gona ka fa puso e ka rarabololang mathata a borakonteraka ka jaana tsela e, e tshwaraganya masimo, meraka le metse, ka jalo e le bothokwa fela thata.

Kgosi ya Dikwididi, Rre Letsebe Mpete ene o buile a menne phatla ka fa ba sa itumelang ka teng, a supa le gore go iphitlhela ba tswaleletswe ke metsi mo Dikwididi ba sa kgone go ya gope le gone go ba utlwisetsa bothoko kwa pele.

Fa a tswa la gagwe, Tona Atamelang o ba kopile go se tlhoboge puso, mme a ba kopa go nna pelotelele a bolela fa go le thata go mekamekana le kgang e e setseng e le kwa makgotleng a ditsheko.

O ba boletse fa puso e itlamile go rarabolola mathata a apereng motse wa bone mabapi le tsela e phuagantsweng ke rakonteraka yo a neng a thapilwe go e dira aka lenaneo la Development Manager Model.

A re puso e ikaelela gore ba thusiwe ka tsela e e bapilelg le e e dirwang gore ba kgone go tsamae ka jaana tsela eo e golaganya metse e mentsi ya Kgatleng Botlhaba le toropo-kgolo Gaborone.

A re go ya pele, puso e tlaa dira melawana e e sireletsang Batswana gore ba seka ba amiwa ke ditlamorago tsa ditlhabololo, a bolela fa go tlaa nna le molao o o sireletsang puso fa e file rakonteraka tiro.

Mopalamente wa Kgatleng Botlhaba, Rre Mabuse Pule ene o boletse fa a eletsa gore puso e potlakele go fetsa tsela e, le gore e seka ya dirisiwa mo sepolotiking ka jaana se se ka e dia go fela.

O kopile banni go nna pelotelele, le gore go ya pele, puso e nne le madi a a segetsweng fa thoko go kgona gore e feme diemo di tshwana le se se diragetseng. **BOPA**



Banni ba Dikwididi ga ba itumelele seemo sa tsela e e gokaganyang Modipane le Mabalane e e phuagantsweng ke rakonteraka. Mothusa-tona wa lephata la dipagamo le dikago, Rre Keoagile Atamelang o boletse fa puso e itlamile go rarabolola dikgang tse di amanang le tsela eo.

## Kgosi Bimbo o bolokwa ka Matlhatso

Cathrine Simane

### TSABONG

Kgosi wa pele wa Draaihoek mo kgaolong ya Kgalagadi Borwa, Kgosi Charles Bimbo o tlaa bolokwa kgwedi eno e le masome a mabedi kwa Draaihoek.

Se se boletse ke motlogolo wa moswi Rre Herman Bahuma mo potsolotsong le BOPA bosheng, a tlhalosa fa dithulaganyo tsa

phitlho di tswelitse sentle.

Kgosi Bimbo o tlhokafetse kgwedi eno e le lesome le bongwe kwa kokelong ya Tsabong morago ga go lwala ka lebakanyana.

Rre Bahuma o ne a tlhalosa fa kgosi Bimbo a tshotswe ka ngwaga wa 1937 mme o tlhokafala ngwaga ono a le dingwaga di le masome a robabobedi le boferabongwe (89).

Rre Bahuma o ne a supa fa Kgosi Bimbo a ne a etelela morafe wa Draaihoek go simolola ka ngwaga wa 1985 mme a tlogela tiro ya bogosi ka bogodi ka kgwedi ya Lwetse ka ngwaga wa 2020 a le dingwaga di le masome a ferabobedi le boraro (83)

Rre Bahuma a re moswi o ne a etelwa pele ke mohumagadi wa gagwe mme o tlogela bana le batsalwa le ene. **BOPA**



Kgosi wa pele wa Draaihoek mo kgaolong ya Kgalagadi borwa, Kgosi Charles Bimbo o tlaa bolokwa kgwedi eno e le masome a mabedi kwa motseng oo.



Department of Veterinary Services' senior veterinary officer for Lobatse, Dr Vincent Kgathi said unkraaled cattle continued to delay surveillance operations as veterinary workers were often forced to construct temporary crushes before carrying out their duties. Photo: Calviniah Kgautlhe

## Unkraaled cattle delay surveillance operations

Calviniah Kgautlhe  
LOBATSE

As the FMD surveillance continues to roll out in Zone II, farmers in the peripheries of Lobatse are encouraged to herd and kraal their livestock for easier management by the veterinary services surveillance team.

In an interview, Department of Veterinary Services' senior veterinary officer for Lobatse, Dr Vincent Kgathi said they have intensified surveillance in the outskirts of Lobatse by carrying out significant processes that involved ongoing detection and monitoring of the FMD virus as part of FMD measures and controls.

So far, he said Lobatse office which covers Ramotswa, Lobatse, Otse, and Mogobane has conducted FMD clinical examinations on 15 000 cattle and vaccinated 7 761 livestock. At present, he said the team was in the peripheries of Lobatse carrying out surveillance in temporary kraals which have been set up by farmers who primarily use the Peleng Dam for watering livestock.

"Farmers from neighbouring villages bring their cattle here for drinking and end up setting up kraals in the outskirts of town. It therefore becomes a challenge to round up all cattle especially that some of them are not branded," he said.

As such, Dr Kgathi encouraged concerned farmers to assist through construction of temporary cattle crushes to enable veterinary officers to carry out FMD disease control measures, adding that they were currently challenged with accessing such facilities, despite them being critical for a swift operation.

He disclosed that the challenge



Department of Veterinary Services' senior veterinary officer for Lobatse Dr Vincent Kgathi

caused delays in surveillance, highlighting that a programme that was scheduled to take a week, took about three weeks as veterinary officers first had to source logs in the bush to construct cattle crushes to be able to do their work.

He nonetheless said they continued to mobilise resources and were able to source one mobile crush which was located in Good Hope. However, he said that was not enough as they needed more. He raised concern that some of the cattle found at Peleng Dam were not branded while others did not have ear tags. He therefore encouraged farmers to herd and kraal their animals and to also come forth to improve FMD surveillance efficiencies in the area.

Dr Kgathi also encouraged farmers to form clusters to be able to build temporary cattle crushes faster to facilitate veterinary officers to carry out surveillance more effectively. **BOPA**

## Moshana residents request land board to speed allocations

Relief Lephutshi  
KANYE

Moshana residents have blamed the village's underdevelopment and the high rate of societal social ills on delayed plot allocation by Kanye Sub-land board.

The concerns, which were shared in a kgotla meeting addressed by the area Member of Parliament, Mr Prince Mosanana in Moshana recently, encompass challenges emanating from a part of the village called Makapane, which is notoriously known for illegally acquired plots.

According to Kgosi Seate Marumo, the illegal acquisition of land at Makapane could partly be influenced by unavailability of land due to allocation delays by the land board.

He said despite the land board's reasons based on geological surveys that Moshana was sitting on land shafts from past mining activities; the same studies had also shown that Gasegwagwane and Mmasenwedi were suitable for plot demarcation and allocation.

He said even though Gasegwagwane and Mmasenwedi were suitable for plot allocation, it remained a mystery why the land board could not allocate

the people of Moshana plots at the two places.

Furthermore, Kgosi Marumo questioned the veracity of the geological findings that raised the issue of mine shafts, saying since Moshana was established back in 1941, there had not been reports of structural damages on buildings despite residents usually building without professional assessments.

He also mentioned allegations of the presence of dolomite in the area, on the basis of which the land board could also not allocate plots.

Worried by the delays in plot allocation, he said residents had proposed to the Kanye Sub Land Board to allocate them land on indemnity basis, a request that he stated was not acceded to.

He decried that his community continued to miss out on maximising on opportunities, among which he cited the

allocation of 100 000 plots two years ago, which he alleged only Moshana did not benefit from.

Residents also expressed concerns that the illegally acquired residences at Makapane harboured illicit activities such as the abuse of various substances, including alcohol.

When responding to Kgosi Marumo's concerns, Kanye Sub Land Board deputy chairperson, Mr Katlego Pelekekae admitted the need for intervention to assist in speeding up land allocation, saying it was crucial that

processes causing delays be looked into. **BOPA**



Kanye Sub Land Board deputy chairperson, Mr Katlego Pelekekae said the land board worked in collaboration with other stakeholder units in administering land, which sometimes caused delays in allocating plots. Photo: Relief Lephutshi

## Africa CDC warns over risks of Ebola spread

ADDIS ABABA

The Africa Centers for Disease Control and Prevention (Africa CDC) on Sunday warned the African continent and the global community over the growing risk of regional spread of the latest Ebola outbreak in the Democratic Republic of the Congo (DRC) and Uganda.

"The affected area is characterised by high population mobility, insecurity, and intense cross-border connectivity with neighbouring countries, including Uganda," director general of Africa CDC, Jean Kaseya, said in a statement issued Sunday.

He said the alert underscored the urgent need for coordinated continental action to prevent further spread and safeguard regional and continental health security.

This came as the death toll from the outbreak, which originated from the Ituri Province in eastern DRC, has risen to 87 in the DRC, according to the latest data from the Africa CDC.

The agency also warned that the outbreak was driven by the Bundibugyo strain, for which no strain-specific vaccine is currently available, and that it carries a high risk of regional spread.

The Africa CDC chief said, in line with the Africa CDC's mandate, when an outbreak affected more than one member state, the agency assumed responsibility for leading and coordinating the response at the regional and continental levels, bringing all partners together.

Noting that the agency was supporting South Sudan to advance preparedness measures, due to its geographical proximity

to Ituri Province, Kaseya said the Africa CDC would continue to work closely with all partners to ensure that timely and appropriate support was provided to all affected and at-risk countries.

On Saturday, the Africa CDC convened a high-level consultative meeting, bringing together more than 130 participants representing affected and at-risk countries as well as global donor partners, including the World Health Organization (WHO), various UN agencies, humanitarian agencies and pharmaceutical companies.

He stressed that the agency "remains fully committed to working with member states and partners to protect lives, contain the outbreak, and strengthen Africa's health security and preparedness architecture." **Xinhua**

## Mozambique launches national water security programme

MAPUTO

Mozambique President Daniel Chapo on Monday launched the National Water Security Compact 2026-2036 to expand access to clean water and sanitation while strengthening the country's resilience to climate change and extreme weather events.

During the launch ceremony in Maputo, Chapo described water security as a strategic pillar for national development, public health and economic transformation.

He said Mozambique currently had national water supply coverage estimated at 62.6 per cent, while sanitation coverage

stands at about 38.2 per cent.

Rural sanitation coverage remains particularly low at 24.6 per cent.

The President said the country's growing population and increasingly frequent climate-related disasters were putting additional pressure on water infrastructure and resource

management systems.

The programme aims to mobilise approximately US\$4.59 billion to support investments in water supply, sanitation and climate resilience infrastructure, with the goal of increasing national water supply coverage to 75 per cent by 2036 while raising sanitation coverage to 60

per cent.

The programme also includes the construction and rehabilitation of four major dams, 1 000 small reservoirs and dams, more than 300 hydrological monitoring stations, and improved water and sanitation facilities in over 12 000 schools and hundreds of health centers nationwide. **Xinhua**

# Arts & Culture

## Selebo earns double nomination at US music awards

Tankiso Mogapi  
GABORONE

Gospel artiste, Gaone Selebo has been nominated once again for the prestigious Gospel Choice Music Award (GMA) in USA, Atlanta, Georgia.

This time, the gospel icon has been recognised in two categories as Gospel Religious Promoter of the year and Radio Announcer of the year, while the previous year, she was nominated in three categories as Best Gospel Promoter of the year, Virtual Talk show of the year as well as Radio Announcer of the year.

Selebo walked away with an award for Best Radio Announcer of the year.

In an interview, Selebo shared that the second nomination demonstrated growth, resilience and patience in her nine-year career.

"I am very excited, especially as the theme this year is about celebrating the heritage of Gospel Music, which to me is a call of duty to take Gospel Music to greater heights in Botswana."

For Selebo, emerging as the winner of this year's awards would stand as a testament of the hard work in her craft and the entire

gospel music industry as well as a reminder of God's great work.

"Winning this award will be a great milestone for me and a stamp of growth in my music career," she said.

The gospel artiste also shared

that beyond the glitz and glamour of award shows, she intended to take gospel music to another level by being an inspiration to upcoming artists in the industry.

"To upcoming artists- building a career in the gospel industry

requires patience and putting God first- values that I invested in when I started in the music industry and continue to uphold today," she advised.

Selebo further revealed that currently, she was simultaneously

*Botswana gospel artiste, Gaone Selebo continues to shine on the international stage after earning two nominations at the prestigious Gospel Choice Music Awards in Atlanta, Georgia, USA. She has been nominated in the categories of Gospel Religious Promoter of the Year and Radio Announcer of the Year.*



## Grand Egyptian Museum marks Museum Day

CAIRO

Visitors from around the world gathered at the Grand Egyptian Museum (GEM) on Monday to celebrate International Museum Day through cultural performances, interactive activities and discussions highlighting the role of museums in promoting dialogue and unity.

Outside one of the museum's entrances, children and adults added colours and drawings to a large mural themed around this year's International Council of Museums slogan, 'Museums Uniting a Divided World.'

The artwork featured pyramids, statues, flowers, and landmarks from different cultures. The event also included performances by cultural troupes from countries including China, India, Germany, Türkiye and Spain, while visitors participated in discussions with Egyptologists and museum curators about ancient Egyptian civilization and museum heritage.

Dalia Mokbel, a teacher at an international school in Egypt, said she brought her students to the museum to combine learning with cultural activities.

"It's such a special day and a special

occasion. I am so proud of this magnificent museum," she said, referring to the International Museum Day, which falls on May 18 annually. Among the foreign visitors was Lin Hongjie from Shanghai, who said he had learned about the museum through Chinese social media before traveling to Egypt. "Everyone says the GEM is truly worth visiting, because it is spectacular and houses a vast collection of extremely precious artifacts," he said.

The museum also hosted an international symposium attended by museum specialists and heritage experts discussing the role of museums in cultural understanding and

sustainability. Khaled Hassan, the GEM's deputy CEO for antiquity affairs, said the celebration aimed to bring together people of different nationalities and cultures at a time marked by wars and global divisions.

"The message to the whole world is that museums play a very important role in preserving heritage and identity, and in uniting a divided world," he said.

Located on the Giza Plateau, just 2km from the Pyramids and the Sphinx, the GEM spans around 500 000 square meters, establishing it as the world's largest museum dedicated to a single civilization.

**Xinhua**

# DailySport

INSIDE SPORT

Selebo earns double nomination at US music awards

Page 7

## ITF tour success bolster host status

Anastacia Sibanda  
GABORONE

The recent hosting of the ITF World Tennis Tour M15 and W15 events in Gaborone marked a significant milestone for tennis development in Botswana and the broader region.

The tournaments attracted exceptional global interest, with more than 500 entries received for the competition.

The overwhelming response resulted in qualifying draws for both singles events and fully subscribed, highly competitive main draws.

Participants from 28 countries across six continents; North America, South America, Europe, Africa, Asia and Australia, took part in the tournaments.

The diversity not only enriched the level of competition, but also demonstrated growing international confidence in Botswana as a safe and capable host of world-class sporting events.

The wide international representation further highlighted Botswana's growing reputation on the global tennis circuit.

On the court, athletes delivered high-quality performances throughout the tournament, with several matches lasting more than three hours and ending late into the evening.

One of the standout moments came during the men's doubles quarterfinals, where Ntungamili Raguin and Mark Nawa faced Australian pair Ty Host and Stefan Vujic in a thrilling encounter that attracted one of the tournament's largest crowds.

Tournament director Nonofo Othusitse said organisers were encouraged by the



One of the standout moments of the ITF World Tennis Tour M15 and W15 events was during the men's doubles quarterfinals, where Ntungamili Raguin and Mark Nawa faced Australian pair Ty Host and Stefan Vujic in a thrilling encounter that attracted the tournament's largest crowd. Photos: Phenyio Ramatu

strong turnout of local tennis fans, including some of Botswana's top athletes from other sporting codes.

He said such cross-sport support was important for the growth and visibility of tennis in the country and contributed to

building a vibrant sporting culture.

"Feedback from key stakeholders has been overwhelmingly positive. Players, fans, media representatives and local sports leadership all commended the event for its organisation and hospitality," he said.

Othusitse said Botswana also received praise for its safety and security standards, accommodation facilities, local cuisine and the warmth and friendliness of its people.

He said such positive experiences were important in encouraging repeat participation and promoting the tournament within the global tennis community through word of mouth.

Othusitse acknowledged that, as with any inaugural event, there were minor challenges, adding that constructive feedback had been received from stakeholders.

He said organisers were committed to addressing areas that needed improvement in preparation for future tournaments.

Beyond the sporting success, Othusitse said the tournaments generated economic activity through tourism and hospitality, enhanced Botswana's international visibility, facilitated skills transfer to local organisers and volunteers and inspired young athletes aspiring to compete professionally.

He added that the tournaments also strengthened partnerships with stakeholders and laid a solid foundation for the continued growth of professional tennis in Botswana.

Furthermore, Othusitse said the successful hosting of the ITF World Tennis Tour M15 and W15 events reflected Botswana's readiness to host professional tennis tournaments and reinforced efforts to commercialise and professionalise the sport.

"Currently, only about nine African countries host either M15, W15 or both tournaments. Botswana is now the 10<sup>th</sup> country to host these professional tennis events," he said.

Other African host countries include Morocco, Egypt, Tunisia, Burundi, Nigeria, Kenya, Rwanda, Angola and South Africa. **BOPA**

## Ancelotti vows Brazil can match world best



RIO DE JANEIRO

Brazil manager Carlo Ancelotti said Monday that his players could compete on equal footing with the world's best, but stopped short of predicting a sixth World Cup title for the South American team this year.

"I'm not a magician, but I'm a worker who has been in this world for 40 years," Ancelotti said after announcing his final 26-man squad for the tournament in the United States, Mexico and Canada.

"I have the knowledge and confidence that this team can compete with the best teams in the world. We have to be demanding, because demands bring more motivation. Can we win the World Cup if we reach the final? I say yes, we can reach the final. The best thing is to get there and win."

Brazil will open its campaign against Morocco in New Jersey on June 13

Brazil Coach  
Carlo Ancelotti

before meeting Haiti and Scotland in Group C.

The Italian named France, Brazil, Argentina, Spain, Portugal and England as the favourites to win the competition, adding that predicting winners was a fool's game.

"There are many teams, but nobody is perfect," he said.

"Brazil is not far behind them and we will compete with confidence."

When asked if he had a message for fans, he replied: "Trust us. We are well-prepared to compete. Football is a game of many details, but I have a lot of confidence in this team. We will fight to produce the best version of the national team."

Eleven of the 26 players named by Ancelotti will be making their World Cup debuts.

The most experienced player in the squad is Neymar, who will be making his fourth appearance in football's showpiece event.

"To succeed in modern football, you need talent," Ancelotti said.

"Fortunately, Brazil has a lot of talent. But you have to combine talent with commitment, the right attitude, teamwork and concentration. That's the work I started when I arrived here a year ago." **Xinhua**